



From the President:

Charlotte Harbor National Estuary Program Citizen's Up-Date

We have an exciting new event on the calendar this year for the first time. We are calling it. 'A Citizens Update.'

The object is to offer the citizens of the Charlotte County an opportunity to get up-to-date on the main environmental issues that concern us. It is taking place on October 26th at 9:00am in the Cultural Center. We chose this time as many of our snowbirds residents will be returning for the winter. Another objective is that through this breakfast meeting we may get to know some of our 450 nonactive members. I think it is important that we know and understand how all our members feel about local environmental issues, so that when we take action, it is on the behalf of all our members.

The speakers we have invited to bring us up-to-date are in every case the most involved and that most knowledgeable. They include the director of the Charlotte Harbor National Estuary Program, Lisa Beever, Charlotte County Commissioner Adam Cummings, the developer of Babcock Ranch, Sydney Kitson, and Charlotte County environmental Specialist Bill Byle.

From these experts we will receive up-to-the-minute information on the current state of the harbor and rivers, the future and security of our water supply, the latest situation in the county's fight to stop phosphate mining in the headwaters of the Peace River.

Sydney Kitson, of Kitson and partners will share his plans for the development of the Babcock Ranch with the citizens of Charlotte County.

As president of Peace River Audubon, I will present the Charlotte County Web life presentation which outlines our concerns regarding future development and the protection of our environmentally sensitive lands.

Admission to the meeting will be free, but in order to have sufficient refreshments we ask those wishing to attend to register, by sending an e-mail to: update@peacriveraudubon.org. For those without e-mail please call(941)639-3879.

DATE & MEETING 2005-06 CHANGES

The meetings will be held on the THIRD WEDNESDAY of the month from 7:00 – 9:00 p.m. The December meeting will be held on December 14.

The Palm Room at the Charlotte County Cultural Center located at 2280 Aaron Street, Port Charlotte FL will be the 2005-06 meeting place

September Field Trip **Fort Desoto Park Migration Special**

Saturday September 24, 7:00 AM
Meet at Peachland Mall parking lot near McDonalds to form car pool. Bring a lunch. This trip will not require much walking.

Annual C.H.E.C. Pot Luck

Our annual "Pot Luck" will be held at the Charlotte Harbor Environmental Center (CHEC) on Saturday, October 1.

Bring something to share and your own plates and silverware.

Schedule:

- 10:00 AM: Meet for a hike along one of the trails.
- 11:00 AM: Share your Summer experiences and relax in the screen room.
- 12:00: Lunch

Directions:

CHEC is located on the west side of Burnt Store Road, approximately one mile south of US 41.

October Walk-About

Laurel Road Landfill and the Celery Fields

Tuesday October 4, 8:00 AM

Meet at Peachland Mall parking lot near McDonalds. No walking. Expect to see eagles, wood storks, and some surprises.

October Field Trip

John Reynolds' Preserve

Saturday October 26, 7:00 AM

Meet at the Winn-Dixie parking lot on Highway 17, east of Punta Gorda to form car pools. Bring a lunch. There will be some walking with John Reynolds, the preserve owner.

October Meeting

The October Meeting will be held on Wednesday October 19 at 7:00 PM in the Palm Room of the Charlotte County Cultural Center. John Reynolds will make a presentation on wild plants that were used by local Indians and early settlers for food and medicine. He will also talk about the plants that grow on the preserve where he lives.

November Walk-About

Ollie's Pond Park

Tuesday, November 8, 8:00 AM

Meet at the Park entrance. A park naturalist will co-lead this event.

Special Event

National Estuary Program: Charlotte Harbor—A Citizens Update

Wednesday, October 26 from 8:30 to 11:45 AM

Presented by the Peace River Audubon Society, and sponsored by the Charlotte Harbor National Estuary Program.

Estuaries are important for birds and wildlife, as well as, for humans. This special half-day program will offer an overview by PRAS and NEP on the harbor estuary system. Hear about the "State of the Harbor" and its importance for wildlife habitats, migratory birding and our drinking water; learn about local efforts regarding area environmental issues including updates on Horse Creek/Phosphate mining and Babcock Ranch preservation. See the President's article in this publication for more information.

Directions: Event will be held in rooms "H" & "F" at the Cultural Center of Charlotte County; 2280 Aaron St. in Port Charlotte. Follow signs for the Cultural Center located east of *US 41/Tamiami Trail. Travel east on Olean and turn north on Aaron. The rooms are near the entrance off of Gertrude Ave.

A 1-mile loop trail takes the visitor around Ollie's Pond. Alligators, birds and numerous reptiles and amphibians can be observed in and around the pond.

To get there: Travel west on 776 from the US 41/776 intersection. Turn left on Collingswood (at the Citgo station). Turn left on Bly Street. The park is located at the intersection of Felda and Bly Streets. Park by the Ollie's pond sign on the side of the road.

Future Special Events

Phosphate Mines Bus Trip

Saturday, November 12

Cost \$5.00

Free lunch

Barbeque at Omni Ranch

Saturday, November 19

Free

Buggy Ride at Corkscrew

Saturday, February 18

Cost \$20.00

Limit 19 people

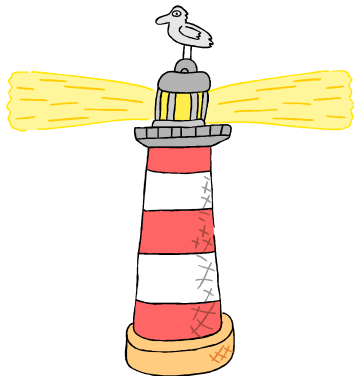
National Estuary Days 2005

The Charlotte Harbor National Estuary Program is pleased to announce National Estuary Days 2005—a time to highlight the importance of estuaries through recreational and educational activities. The official National Estuary Day is celebrated Saturday, September 24, but too many events are offered locally to fit in one day!

Special events, wading trips, guided walks, boat tours and paddling events have been scheduled to provide opportunities to learn about estuaries by experiencing them first hand. To learn more about the scheduled events, visit the Charlotte Harbor National Estuary Program web site at www.CHNEP.org.

WHAT YOUR BOARD'S BEEN DOING...

- Developing the 2005-2006 program schedule
- Developing an educational outreach program
- Implementing web site improvements
- Working on the creation of a cross-Florida wilderness trail
- Supporting the Babcock Preservation Partnership



Birding Sites

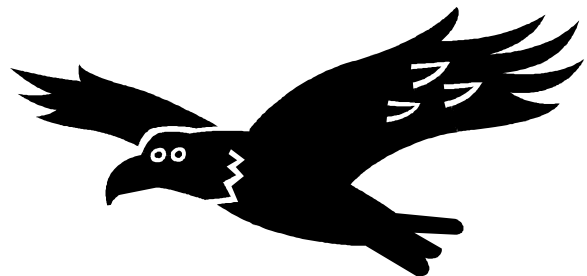
OYSTER CREEK PARK

Description: The Park is situated on the north side of Oyster Creek and covers about 135 acres. Oyster Creek is located on the greenway waterway corridor known as the Oyster Creek, Lemon Bay Aquatic Preserve, Ainger Creek waterway. The San Casa site is adjacent to the Park on the South side of the Creek. Future plans call for a bridge over the Creek to connect the two areas. Currently, the Park has an observation deck to allow visitors to view wild life and the mangroves along the Creek. The rest of the Park consists of mature pine flatwoods. Additional infrastructure including an entrance area, parking spaces, picnic facilities, restrooms, and a trail system are expected to be completed by the winter of 2006. These additions were delayed by hurricane Charley. Oyster Creek Park is best visited during the winter months; through the summer and fall the grounds are wet.

Location: The Oyster Creek park is directly across Placida Road (CR 775) from the Cedar Point Environmental Center. Lemon Bay High School is to the North of the Park on Placida Road. The Park can be reached by following CR 776 toward Englewood for about 14 miles (from the intersection of US41 and CR776). Turn left on CR 775 and proceed for about two miles to the Park. The Park can be entered on an undeveloped trail wide enough for a vehicle; 4-wheel drive currently is necessary in the wet season.

Amenities: None currently available.

Animal Species: White Ibis, Snowy Egret, Bald Eagle, Gopher Tortoise, Osprey, Florida Pine Snake, Wood Stork, Roseate Spoonbill, Little Blue Heron, Reddish Egret, Limpkin and Tricolored Heron.



The Peace River Audubon Society
 PO Box 510760
 Punta Gorda, FL 33951-0760

Non-profit Organization
 U.S. Postage Paid
 Punta Gorda, FL
 Permit No. 100

View the White Bird on:
www.peacriveraudubon.org



September-October 2005
White Bird



Printed on Recycled Paper
 C & R Graphics (folding donated)

2005-06 OFFICERS & DIRECTORS:

(941)

President	Paul Holmes '05	833-3337
Vice President	Carol MacDougall '07	629-9120
Secretary	Mary Ann Hughes '06	637-7855
Treasurer	Walt Williams '07	235-3352
Additional Directors:	Phyllis Doggett '06	575-4009
	John Leavy '07	639-3272
	Betty Talburt '06	766-0354
	Frank Walker '07	639-3879
	Jan Walker '07	639-3879

Please:

Check the "Exp" date on your address label!

"0405" means your PRAS and/or National membership expires in Apr '05 (both organizations stop mailings after 2-3 months). To save the cost of sending reminder post cards, if your expiration date has or will expire, **please** use the application below to renew your membership.

MEMBERSHIP

Please direct all membership changes, etc. to Chairman Betty Talburt at 766-0354.

The Peace River Audubon Society is a 501 (c)(3) non-profit organization. Our Federal tax ID number is 59-2190872. We do not engage a professional solicitor and 100% of the funds generated by this request will be used to support our Chapter programs. Our registration number with the FDA Division of Consumer Services is SC-040701.

FAMILY MEMBERSHIP APPLICATION — (Choose A or B below)

(A) /we want to join or renew membership in the local PEACE RIVER AUDUBON for \$10!

Join us to protect the air we breathe, the water we drink, and the wildlife we love...help us protect our Florida. Members receive 10 issues of the "White Bird" newsletter with local news articles, local meetings, field trips and bird walks.

Visit our web site: www.peacriveraudubon.org

Name: _____
 Organization: _____
 Address: _____
 City: _____ State: _____ Zip: _____ - _____
 Phone: () _____ E-mail: _____

MAIL \$10 CHECK WITH THIS FORM DIRECTLY to:
 PRAS, PO Box 510760, Punta Gorda, FL 33951-0760.

(B) /we want to join or renew National Audubon for:

- \$15 = 1-yr Student/Senior Rate (62+) \$1,000 Individual Life
- \$20 = 1-yr Introductory National Audubon Rate \$1,500 Dual Life
- \$30 = 2-yr Special National Audubon Rate

Please make checks payable to National Audubon Society

My check is enclosed or Please bill me

Name: _____
 Address: _____
 City, State, Zip: _____ **E14-7XCH**
 Phone: () _____

Mail to: National Audubon Society, Membership Data Center,
 P.O. Box 51003, Boulder, CO 80323-1003

Note: National Audubon members receive 6 bi-monthly "Audubon" magazines/year and some discounts at Audubon Centers across the US A, **PLUS, you automatically** receive the same "White Bird" issues as PRAS members do in Option A.

Check here if you do not wish to receive "Audubon" Magazine